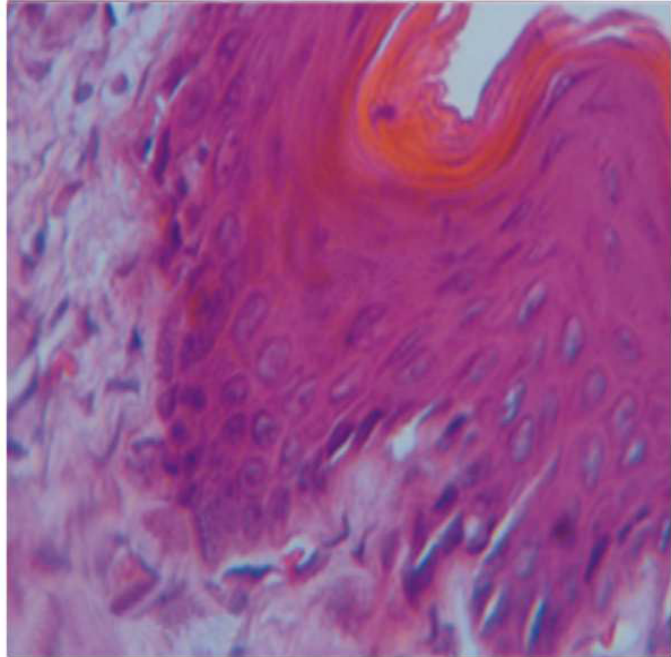


ISSN 1979-1305

VETERINARIA *Medika*



Vet Med | Vol. 4 | No. 1 | Hal 1-86 | Surabaya, Pebruari 2011

**FAKULTAS KEDOKTERAN HEWAN
UNIVERSITAS AIRLANGGA**

Table of Contents

No.	Title	Page
1	Production and Specificity Testing of Monoclonal Antibodies to Bovine Zonna Pellucida 3 Deglycosylated (Mab-bZP3dG) for Woman Immunocontraceptive Vaccine	1 - 4
2	Potency of Crude Spirulina on Protein Efficiency Ratio in Laying Hen	5 - 8
3	H-Y antisera Preparation and X Chromosomal Receptor Tracer as Sex Determination Prototype	9 - 14
4	Erythrocyte's Form Changes in Dog's Blood Smear Before and After the Storage Using Citrate Phosphate Dextrose	15 - 18
5	Avian Influenza H5N1 Vaccine Candidate for Chicken from East Java Isolate Virus	19 - 24
6	Pengaruh Pemberian Antagonis Reseptor N-Metil-D-Aspartat (NMDA) Mk-801 Terhadap Penurunan Sensasi Nyeri Inflamasi pada Mencit Putih (Mus Musculus) Strain Balb/C	25 - 36
7	Exploration Cellulolytic of Bacterium of Rumen Liquid Beef Cattle As Inoculum of Waste Agriculture	37 - 42
8	Respon hMG Toward Ovarium Development In Goat	43 - 48
9	Identification Of Pregnancy Associated Glycoprotein (PAG) From Milk Of Pregnant Dairy Cattle	49 - 52
10	The Role Of Soil As A Helminths Transmitter Around The Habitas of Babirusa	53 - 56
11	Potency of Brown Seaweed (Sargassum duplicatum Bory) Ethanol and Ethyl Acetic Fraction to Malondialdehyde Concentration Decreasing and Histological Retrival of IBD (Inflammatory Bowel Disease) Rat Small Intestinal Jejunum	57 - 64
12	Blood Glucose and Total Blood Protein Profile in Sheep Provided With Lactic Acid Bacteria and Yeast on King Grass and Rice Straw	65 - 70
13	Effect Of Pegagan (Centella Asiatica) Extract in Ovariectomized Wistar-strain Rattus norvegicus On Epithelial Proliferation Of Vaginal Wall	71 - 76
14	Excessive Dose Of Vitamine A On Skeletal Development In The Mice Embryos	77 - 80

Blood Glucose and Total Blood Protein Profile in Sheep Provided With Lactic Acid Bacteria and Yeast on King Grass and Rice Straw

Profile Total Protein dan Glukosa Darah Domba yang Diberi Starter Bakteri Asam Laktat dan Yeast pada Rumpun Gajah dan Jerami Padi

1. Wahyuni, R.S --> Fakultas Kedokteran Hewan Universitas Airlangga / .
2. Bijanti, Retno --> Fakultas Kedokteran Hewan Universitas Airlangga / .
3. Sidiq, Romziah --> Fakultas Kedokteran Hewan Universitas Airlangga / .

Abstract

The research is aimed to find out metabolic product rumen fluid of sheep, given silage feed with *Lactobacillus* sp. suspension and yeast nor without *Lactobacillus* sp. suspension. Twelve male sheep age one year were divided into four treatments. The treatments were as followed: P0: King Grass 35%, Rice Straw 35%, Concentrate 30%, Molasses and Water, P1: King Grass 35%, Rice Straw 35%, Concentrate 30%, *Lactobacillus* suspension, P2: King Grass 35%, Rice Straw 35%, Concentrate 30%, Molasses and *Saccaromyces cerevicea*, P3: King Grass 35%, Rice Straw 35%, concentrate 30%, *Lactobacillus* suspension and *Saccaromyces cerevicea*. Feed was given in three weeks. Blood protein and glucose level were examined at 4, 6, and 24 hours post feeding. The result showed significant difference on blood protein and glucose level with P1 shows the highest blood protein level and the highest blood glucose level was shown at 4 hours post feeding.

Keyword : Blood, protein, Blood, glucose, ,

Daftar Pustaka :

1. **Rejeki, F.S., (2004).** Bakteri Selulolitik Anaerob Sebagai Inokulum Silase Kulit Buah Coklat (*Theobroma cacao*).. Surabaya : Disertasi. Program Pascasarjana Universitas Airlangga
2. **Chen, X.B., Y.K. Chen, M.F. Franklin, E.R. Orskov and W.J. Shand, (1992).** The effect of feed intake and body weight on purine derivate excretion and microbial protein supply in sheep. United States : *J.Anim.Sci.* 70 : 1534-1542.
3. **Anggorodi, (1999).** Ilmu Makanan Ternak Umum. Ed 5. Jakarta : PT.Gramedia Pustaka Umum