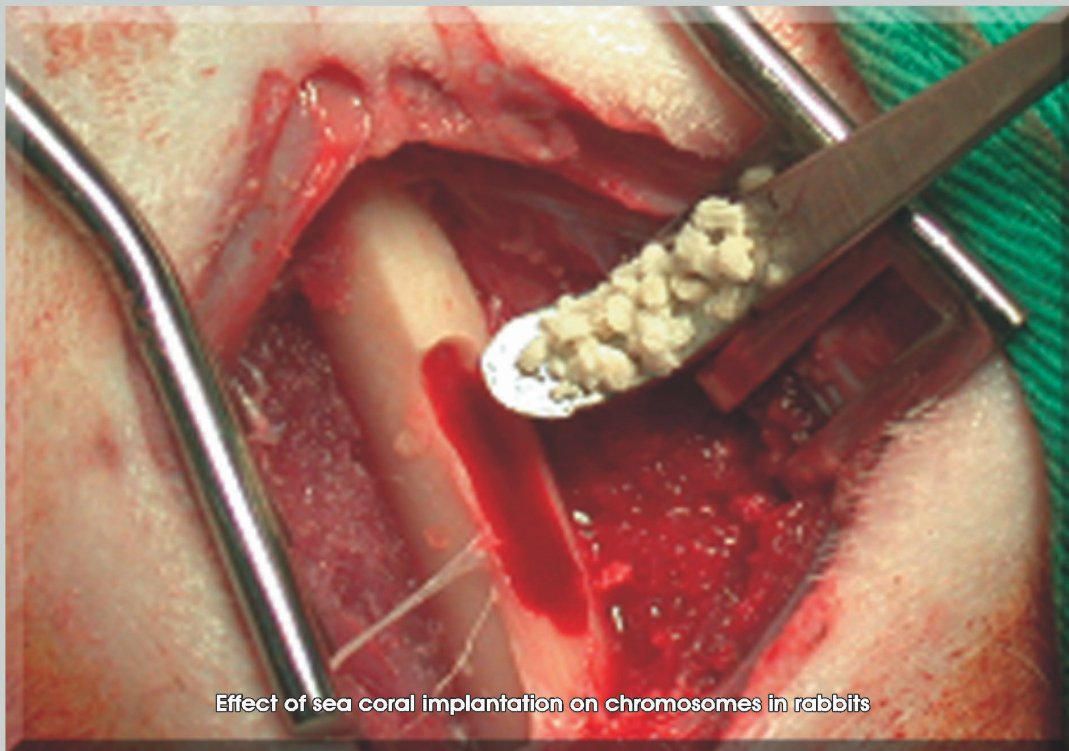


Majalah Kedokteran Gigi

Dental Journal



Faculty of Dentistry Airlangga University
Indonesia

Maj. Ked. Gigi (Dent.J.)	Vol. 39	No. 1	P. 1-42	Jan - Mar 2006	ISSN 0852-9027
--------------------------	---------	-------	---------	----------------	-------------------

Accredited No. 34/DIKTI/Kep/2003

Table of Contents

No.	Title	Page
1	Effects of irrigation solutions and Calcium hydroxide dressing on root canal treatments of periapical lesions	-
2	Lip and allar base dimensions among adolescence in healthy and post unilateral cleft lips correction in deutro-malaid population	-
3	Study on the cytotoxicity and chromosome aberration following implantation of sea coral in rabbits	-
4	Antimicrobial effects of Coleus amboinicus, Lour folium infusum towards Candida albicans and Streptococcus mutans	-
5	Manufacturing hollow obturator with resilient denture liner on post hemimaxillectomy	-
6	Poor oral hygiene as trigger of diabetes mellitus progressiveness	-
7	Inhibition effect of calcium hydroxide point and chlorhexidine point on root canal bacteria of necrosis teeth	-
8	Hybrid layer difference between sixth and seventh generation bonding agent	-
9	Dental root periapical resorption caused by orthodontic treatment	-
10	The effect of caffeine on osteoblast proliferation after tooth extraction in Wistar rats	-

Lip and allar base dimensions among adolescence in healthy and post unilateral cleft lips correction in deutro-malaid population

Lip and allar base dimensions among adolescence in healthy and post unilateral cleft lips correction in deutro-malaid population

1. Coen Pramono --> Department of Oral and Maxillofacial Surgery Faculty of Dentistry Airlangga University
Surabaya - Indonesia / coen_pram@yahoo.com

Abstract

The purpose of this study is to observe the differences between some anthropometric values of the lip and allar base area in normal and those who had undergone incomplete unilateral cleft lip surgical correction using Millard's I technique. The investigation was done on male and female adolescence of 12-15 years of age. Thirteen anthropometric dimension variables were observed, as X1 = width of the allar base, X2 = the distance between two corners of the mouth, X3 = the distance between the center of the lip and the right mouth corner, X4 = the distance between the center of the lip and the left mouth corner, X5 = the distance between the center of the allar base and the center of the upper lip, X6 = the distance between upper part of two philtrum pillars, X7 = the distance between two philtrum pillars base, X8 = the height of right philtrum pillar, X9 = the height of left philtrum pillar, X10 = the distance between the right allar base to the right mouth corner, X11 = the distance between the left allar base to the left mouth corner, X12 = the width of the right nostril, and X13 = the width of the left nostril. The t-test analysis showed the average of the anthropometric lip and allar base dimensions among male adolescence groups in variables of X1, X2, X4, X5, X6, X7, X10, X11, X12, and X13 shown with significant differences from those of some variables which had undergone incomplete unilateral cleft lip surgical correction ($p < 0.05$). The result of the test among the female group presented a significant difference in variables of X4, X5, X6, X9, X11, X12 and X13 ($p < 0.05$). It concluded that there are differences in dimensions of the lips and allar bases among normal and post-surgical groups both in adolescence males and females.

Keyword : Lip, and, allar, base, anthropometric, dimensions, incomplete, unilateral, cleft, lip, post, correction, anthropometric, dimensions, bird, face, Millard's, I, surgical,

Daftar Pustaka :

1. **Langman, (1975)**. Medical embryology. Baltimore : William and Wilkin
2. **Stevenson, (1993)**. Human related anomalies. New York : Oxford University Press
3. **Hall, (1993)**. Human related anomalies. New York : Oxford University Press
4. **Goodman, (1993)**. Human related anomalies. New York : Oxford University Press
5. **Jones, (2000)**. The genetic of cleft lip and palate: Information for families. - : Booklet Cleft Palate Foundation
6. **Krueger, (1974)**. Textbook of oral surgery. St Louis : The CV Mosby Co
7. **Pucket, (1980)**. Late correction of orbicularis discontinuity in bilateral cleft. - : Cleft Palate Journal
8. **Neal, (1974)**. Secondary correction of bilateral cleft lip deformities with Millard's midline muscular closure. - : Plastic and Reconstructive Surgery Journal
9. **Greer, (1974)**. Secondary correction of bilateral cleft lip deformities with Millard's midline muscular closure. - : Plastic and Reconstructive Surgery Journal
10. **Nobel, (1974)**. Secondary correction of bilateral cleft lip deformities with Millard's midline muscular closure. - : Plastic and Reconstructive Surgery Journal
11. **Reinisch, (1980)**. Late correction of orbicularis discontinuity in bilateral cleft. - : Cleft Palate Journal
12. **Warner, (1980)**. Late correction of orbicularis discontinuity in bilateral cleft. - : Cleft Palate Journal
13. **Amaratunga, (1988)**. A comparison of Millard's and LeMesurier's methods of repair of the complete unilateral cleft Lip using a new symmetry index. - : Journal Oral Maxillofacial Surgery
14. **Winoto, (1981)**. Studi profil fasial Indonesia di Surabaya dengan pendekatan sefalometrik. - : Desertasi
15. **Hamilah, (2000)**. Pola pertumbuhan jaringan lunak kraniofasial serta kaitannya dengan pola pertumbuhan jaringan keras kraniofasial dan pertumbuhan umum. - : -
16. **Munakhir, (1995)**. Pola sidik bibir penduduk propinsi Daerah Istimewa Yogyakarta. Kajian pada kelompok populasi Jawa dan Cina di Sekolah Menengah Atas Kotamadya Yogyakarta. - : Thesis
17. **Glinka, (1978)**. Gestalt und herkunft: Betrag zur anthropologischer Kleiderung Indonesiens. Angestint : Bein Bonn Verlag des Antropos Institute
18. **Rasyid, (1980)**. Penduduk Indonesia: Hasil sensus penduduk 1980. Jakarta : Biro Pusat Statistic

-
19. **Martin, (1988)**. Handbuch der vergleichenden Biologi des Menschen. Stuttgart : Gustav Fischer Verlag
 20. **Fara, (1977)**. Reconstructive plastic surgery. Principles and procedures in correction, reconstruction and transplantation. Philadelphia : WB Saunders Co