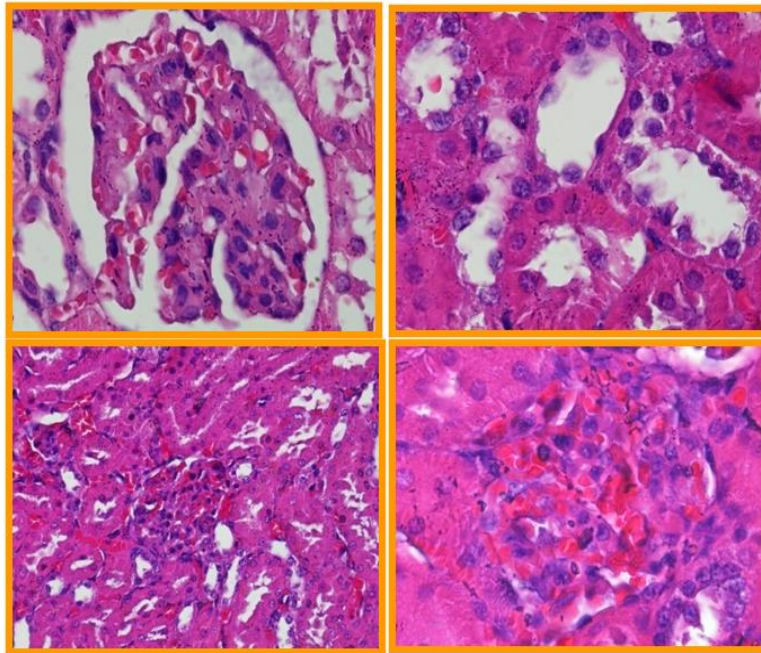


ISSN 2302-6820

# Journal of Basic Medical Veterinary



JBMV.	Vol. 2	No. 2	Hal. 47—89	Surabaya, Des 2013	ISSN 2302-6820
-------	--------	-------	------------	--------------------	----------------

## Table of Contents

No.	Title	Page
1	LDL CHOLESTEROL LEVELS OF MALE RATS ( <i>Rattus norvegicus</i> ) AFTER TRANS FATTY ACID IN MARGARINE AND SHORTHENING CONSUMPTION	124 - 129
2	THE EFFECT OF <i>Cosmos caudatus</i> LEAF ETHANOL EXTRACT IN LIVER ON PARACETAMOL INDUCED ELEVATION SGOT AND SGPT IN BALB/c MICE	130 - 136
3	CHOLESTEROL LDL WHITE MOUSE ( <i>Rattus novergicus</i> ) LEVELS GIVEN Trans FATTY ACIDS FROM MARGARINE, WHITE BUTTER AND WASTE COOKING OIL	137 - 142
4	TIME PATERN OF <i>Curcuma zedoaria</i> ETRACT AGAINST AMOUNT OF MICE PULMONARY NODULES INDUSCED BY Benzo(±)pyrene	143 - 147
5	THE EFFECT OF MENIRAN ( <i>Phyllanthus niruri</i> Linn) INFUSION ON KIDNEY HISTOPATHOLOGICAL OVERVIEW OF WHITE RATS ( <i>Rattus norvegicus</i> ) EXPOSED BY ALKOHOL	70 - 76
6	THE EFFECT OF GIVING GOSSYPOL IN ( <i>Gossypium hirsutum</i> ) TO CRICKET AS NATURAL INSECT KILLER	77 - 81
7	ANTIBACTERIAL POTENTIAL OF INFUSUM SALAK ( <i>Salacca zalacca</i> ) TO <i>Staphylococcus aureus</i> AND <i>Escherichia coli</i> AN IN VITRO	82 - 85
8	<b>IN VITRO CYTOTOXIC EFFECTS OF ROSELLA EXTRACT (<i>Hibiscus sabdariffa</i>) AGAINST MYELOMA CELL CULTURE</b>	86 - 89

IN VITRO CYTOTOXIC EFFECTS OF ROSELLA EXTRACT (*Hibiscus sabdariffa*) AGAINST MYELOMA CELL CULTURE

EFEK SITOTOKSIK IN VITRO DARI EKSTRAK BUNGA ROSELLA (*Hibiscus sabdariffa*) TERHADAP KULTUR SEL KANKER MYELOMA

**Author :**

Rochmah Kurnijasanti |  
Fakultas Kedokteran Hewan  
Isa Mahendra |  
Fakultas Kedokteran Hewan  
Nancy Dahnia |  
Fakultas Kedokteran Hewan  
Rangga Mung |  
Fakultas Kedokteran Hewan  
Margaretha |  
Fakultas Kedokteran Hewan  
Arnold Hutapea |  
Fakultas Kedokteran Hewan

**Abstract**

This research aims was examined the anticancer activity of rosella extracts (*Hibiscus sabdariffa*) on myeloma cell culture by myeloma cell viability method. Myeloma cancer cells incubated in medium Rosewell Park Memorial Institute (RPMI) containing 10% fetal bovine serum (FBS). Rosella extract concentration consists of 10%, 20%, 30%, 60%, and 100%. Rosella extract was added to the myeloma cell cultures that had been placed in a microwell plate and incubated for 24 h at 37 ° C with carbon dioxide gas (CO<sub>2</sub>) 5%. Anticancer activity seen by the MTT Cell Proliferation assay were read by ELISA reader, with optical desity (OD) of the number of dead cells. Data were analyzed by ANOVA and Duncan's multiple range test showed that the rosella extract has the ability to kill myeloma cells.

Keyword : *Hibiscus*, *sabdariffa*, , , , , ,

**Daftar Pustaka :**

1. **Chang, Y.C., S.F. Chen., S. Nien., C.H. Wu., C.L. Liu, Y.S.Lin., (2012).** . Reappraisal of the Anticancer Efficacy of Quercetin in Oral Cancer Cells. . China : Journal of the Chinese Medical Association 76 (2013) 146e152
2. **Didah, N.. , (2005).** Pengaruh Pemberian Seduhan Kelopak Rosella Ungu Terhadap Kadar Kolesterol LDL Serum Tikus. . Semarang : Program Studi Ilmu Gizi. Fakultas Kedokteran. Uni-~~ver~~-sitas Diponegoro.

